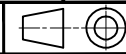


To contact us - Tel +44 (0)1279-729051 email: info@powerproducts.co.uk

**IF IN DOUBT  
ASK**

All information contained in this document is confidential and the copyright reserved

Used on dwg MANUAL

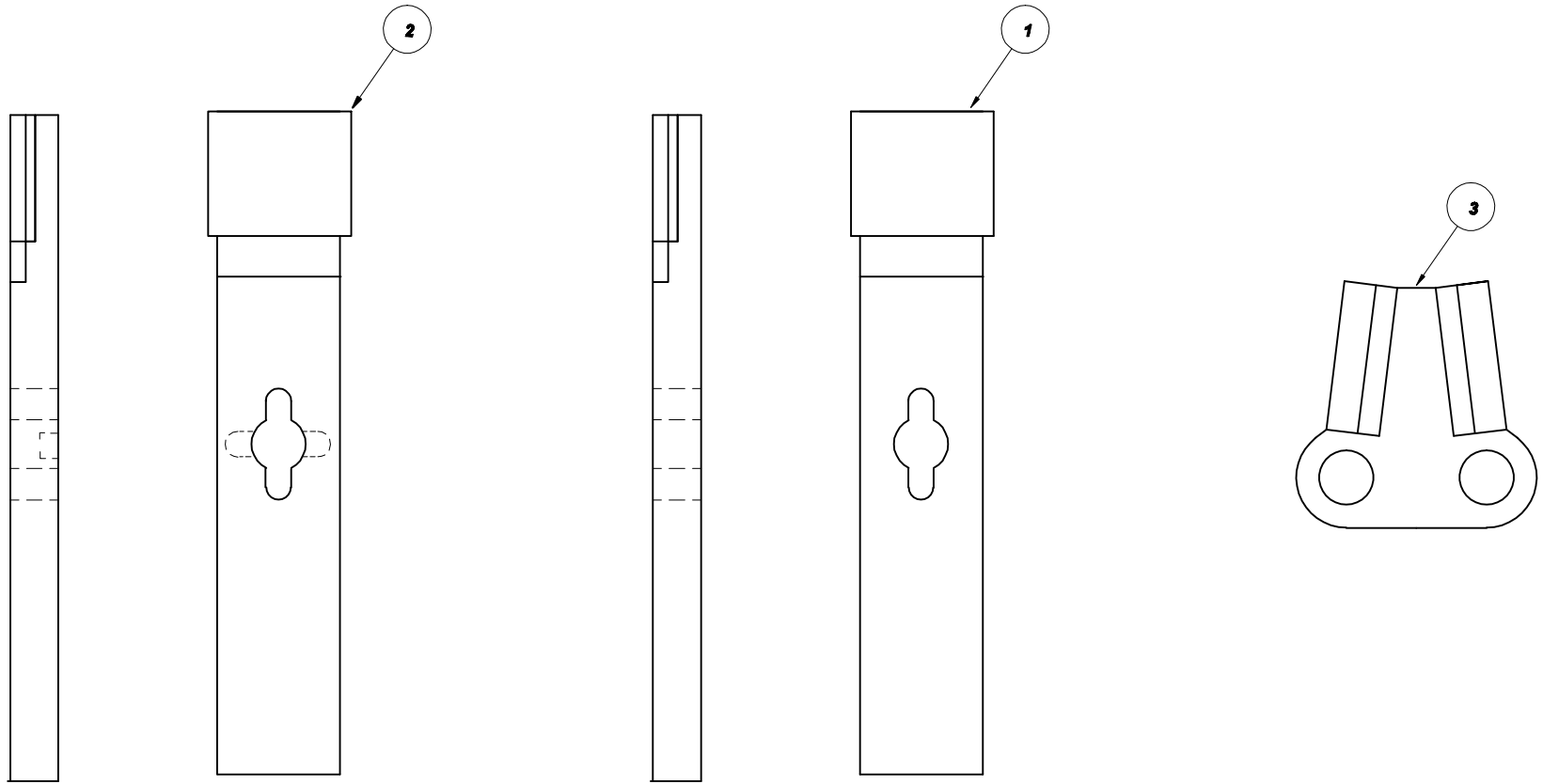


**P100908**

**NOTE - 102 FIXED CONTACTS (DETAIL 3) ARE REQUIRED FOR A FULL SET OF REPLACEMENTS, HOWEVER THIS CAN BE REDUCED BY MOVING CONTACTS FROM OUTSIDE TO THE INSIDE**

Quantity				No	Description	Detail No	OEM Part No
D	C	B	A				
		6	6	1	MOVING CONTACT (UPPER)	P100005/A	
		6	6	2	MOVING CONTACT (LOWER)	P100005/B	
		As Req		3	FIXED CONTACT	P100004/A	

**GROUP A - SET OF MOVING CONTACTS**  
**GROUP B - SET OF MOVING CONTACTS PLUS FIXED CONTACTS (AS REQUIRED) - SEE NOTE.**



**SUB STATION  
SUPPLY  
SOLUTIONS**

**PATTERN FIXED AND  
MOVING CONTACTS FOR  
AEI S21 AX2T TAPCHANGER**

No	Revision notes	Date/Sig	No	Revision notes	Date/Sig	No	Revision notes	Date/Sig	Scale NTS	Drawn ACS	Checked AJT	Approved AJT	Date 28/03/10	Sheet No	<b>P100908</b>	REV <b>0</b>
----	----------------	----------	----	----------------	----------	----	----------------	----------	-----------	-----------	-------------	--------------	---------------	----------	----------------	-----------------