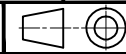


To contact us - Tel +44 (0)1279-729051 email: info@powerproducts.co.uk

**IF IN DOUBT ASK**

All information contained in this document is confidential and the copyright reserved

Used on dwg MANUAL



**P100901**

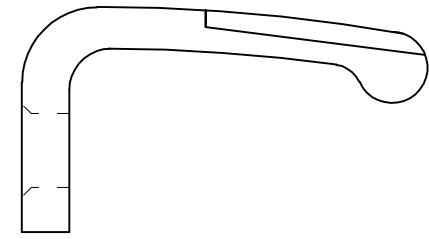
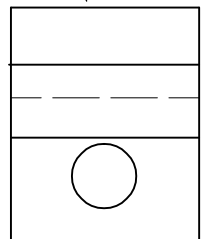
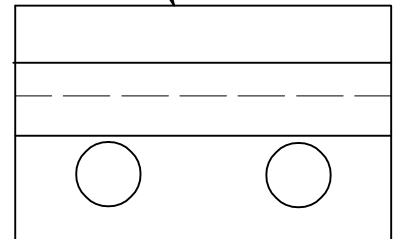
Quantity				No	Description	Detail No	Nat Com Code	OEM Part No
D	C	B	A					
		24	24	1	FIXED/MOVING CONTACT	P100009/A	35-37-883	C4244164 Item 1
			12	2	FIXED/MOVING CONTACT	P100010/A	35-37-884	C4244164 Item 2
				3	SELECTOR COVER GASKET	P100053/1		
				4	DIVERTER GASKET	P100053/2		
				5	SELECTOR INSP COVER GASKET	P100053/3		

STYLE No 336820 (A2122061)

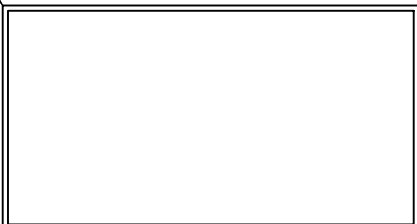
2 - STYLE No 336821 (B226783 ASSY)

1

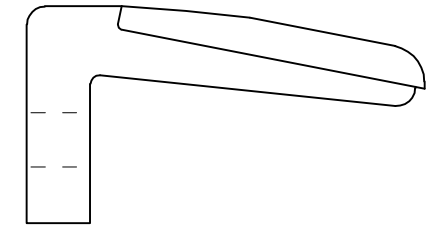
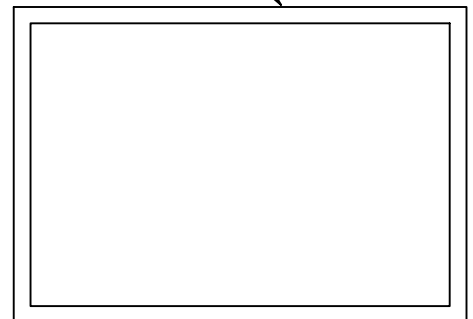
GROUP A - M31, M32, M51, M52 & M56 TAPCHANGERS  
GROUP B - M54 TAPCHANGER



4

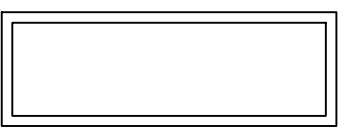


3



ALTERNATIVE TO EXTRUDED TYPE

5



**SUB STATION  
SUPPLY  
SOLUTIONS**

**PATTERN CONTACTS FOR  
TYPE M31, M31, M51, M52  
M54 & M56 TAPCHANGERS**

No	Revision notes	Date/Sig	No	Revision notes	Date/Sig	No	Revision notes	Date/Sig	Scale NTS	Drawn ACS	Checked AJT	Approved AJT	Date 28/03/10	Sheet No	<b>P100901</b>	REV 0
----	----------------	----------	----	----------------	----------	----	----------------	----------	-----------	-----------	-------------	--------------	---------------	----------	----------------	----------