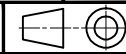


To contact us - Tel +44 (0)1279-729051 email: info@powerproducts.co.uk

**IF IN DOUBT  
ASK**

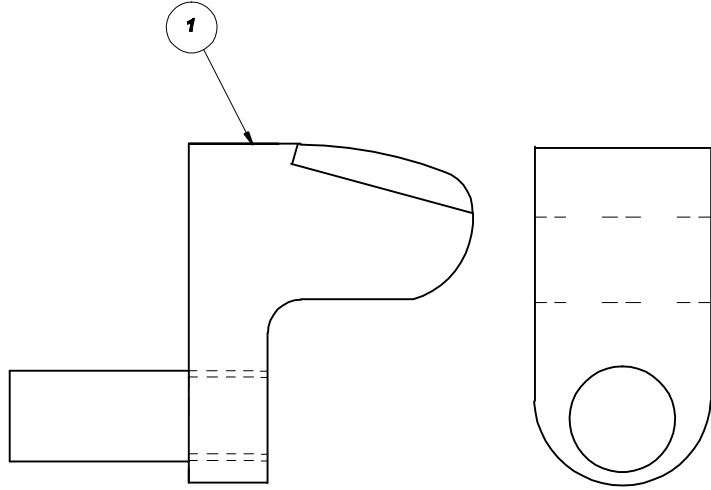
All information contained in this document is confidential and the copyright reserved

Used on dwg MANUAL

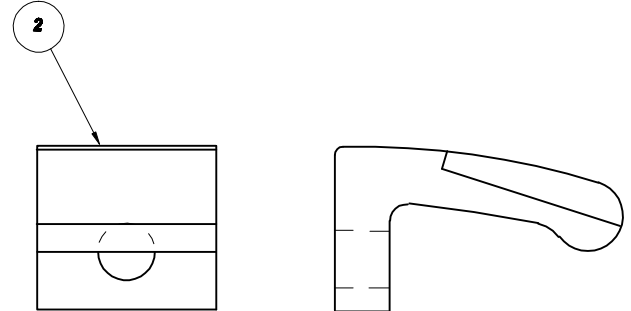


**P100900**

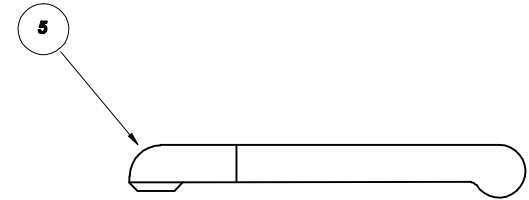
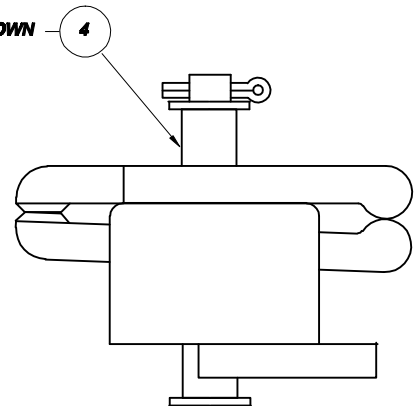
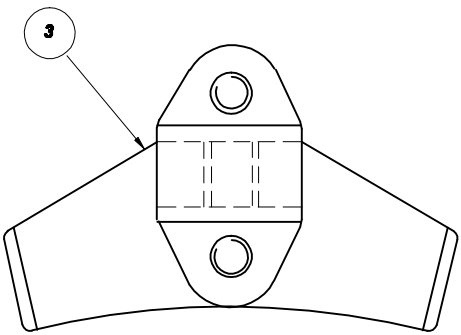
| Quantity |   |    |    | No | Description               | Detail No | OEM Part No |
|----------|---|----|----|----|---------------------------|-----------|-------------|
| D        | C | B  | A  |    |                           |           |             |
|          |   | 12 |    | 1  | FIXED DIVERTER CONTACT    | P100001/A |             |
|          |   | 12 | 24 | 2  | DIVERTER CONTACT          | P100002/A |             |
|          |   |    |    | 3  | FIXED SELECTOR CONTACT    | P100049/1 |             |
|          |   |    |    | 4  | MOVING SEL CONTACT ASSY   | P100047/A |             |
|          |   |    |    | 5  | MOVING SEL CONTACT FINGER | P100047/1 |             |



GROUP A = M21  
GROUP B = 2M21 WITH FIXED CONTACT 100-001-A AND MOVING CONTACT 100-002-A



SPRINGS AND SCREWS NOT SHOWN



**SUB STATION  
SUPPLY  
SOLUTIONS**

**PATTERN DIV & SEL SWITCH  
CONTACTS FOR AEI TYPE  
M21 & 2M21 TAPCHANGERS**

| No | Revision notes | Date/Sig | No | Revision notes | Date/Sig | No | Revision notes | Date/Sig | Scale NTS | Drawn ACS | Checked AJT | Approved AJT | Date 28/03/10 |
|----|----------------|----------|----|----------------|----------|----|----------------|----------|-----------|-----------|-------------|--------------|---------------|
|    |                |          |    |                |          |    |                |          |           |           |             |              |               |

|          |                |     |
|----------|----------------|-----|
| REV No   | <b>P100900</b> | REV |
| Sheet No |                | 0   |